

# THE BANC

## Something sweet?

FRESHLY HOME-MADE

### Desserts

#### VANILLA VOLCANO CREAM CAKE 12

Cream cheese cake with butter, milk, vanilla beans and chocolate/custard emulsion.

#### TOFFEE AND HONEYCOMB CHEESECAKE 10

Description: Topped with caramel and strawberries, strawberry caviar, glass sugar, and caramelised kumquat.

#### LOTUS BISCOFF CHEESECAKE 10

A delightful blend of Lotus Biscoff, accompanied by Kumquat and a caramelised sugar glass.

#### STICKY TOFFEE PUDDING 10

Served with a side of ice cream.

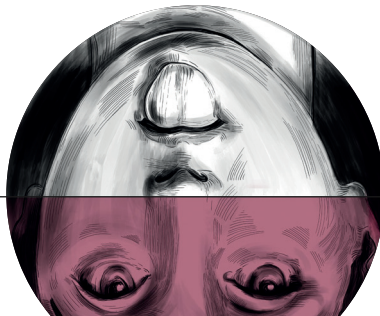
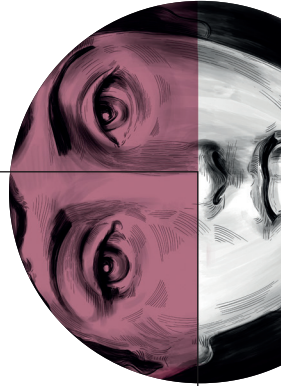
#### NUTELLA CHEESECAKE 10

Soft Nutella cream cheese blend with a crunchy Oreo biscuit based, served with mixed berries and custard.

#### ROCK SIDE BROWNIE 9

Served with honeycomb and vanilla ice cream.

May contain allergens, please notify your server of any allergies



# THE BANC

## Something hot?

### Tea & Coffee

#### BANC X UNION COFFEE

BLACK COFFEE 3

WHITE COFFEE 3

SINGLE ESPRESSO 2.7

DOUBLE ESPRESSO 3

CAPPUCCINO 3

LATTE 3

RED VELVET LATTE 4.5

CHAI LATTE 4.5

MOCHA 3

LIQUEUR COFFEE 7

AMERICANO 3

FLAT WHITE 3

HOT CHOCOLATE 3

Bounty chocolate, Oreo chocolate  
or caramel syrup all +1

COLD ICE COFFEE 3

#### NOVUS TEA

ENGLISH BREAKFAST 3

SAPPHIRE EARL GREY 3

EGYPTIAN/PEPPERMINT 3

PERSIAN POMEGRANATE 3

LEMON & GINGER TEA 3

